

आनंदी  
HOMES

मित्रमंडल

📍 Mitramandal  
Colony



आनंदी  
HOMES by,



**"Home isn't a place, it's a feeling"**

**At Anandee Homes, we believe that life is not about numbers, profit, size or scale. The test is the quality of impact that we have on each soul. We strive to deliver a personification of happiness through superior quality homes to each of our customers.**

**We aim to construct buildings with modern, environment friendly and future-ready architecture using effective and efficient engineering practices.**

**Anandee Homes is led by Mr. Kishor Paranjape, a veteran of the construction industry with over 30 projects to his name. We currently have 4 ongoing projects in Pune city – at Mitramandal Colony, Deccan Gymkhana, Erandwane and Model Colony.**

**Anandee Homes is the real-estate venture of Datar Engineering & Consultancy Pvt. Ltd. DATAR is a multi-domain company with diverse ventures in manufacturing, engineering services and construction.**





Located in the serene neighbourhood of Mitramandal colony, in the bustling heart of Pune city, 'Trimurti' is the ultimate retreat for urban dwellers.

Developed by Anandee Homes, a name synonymous with excellence in construction, design, and engineering, this project introduces 10 exquisitely crafted residences tailored to meet modern living standards.

**Sustainability-focussed:**

Solar powered, rainwater harvesting, and EV charging points.

**Modern convenience:**

Designer entrance lobby and a sleek architectural design.

**Future-ready living:** Thoughtfully planned for the needs of the next generation.

**Accessibility:**

Equipped with elevators for seamless connectivity.

At its core, Trimurti balances luxury and functionality, offering a perfect home for you and your family. Step into a world of timeless elegance and sustainable living with **'TRIMURTI' by Anandee Homes.**





## AMENITIES



Adequate car and scooter parking.



Generator based power backup.



Automatic lift upto terrace level.



Solar powered common utilities.



Next-gen security with CCTV coverage & Secure entry automation.



A terrace with senior-friendly landscaping and comfortable seating areas.



Charging point for electrical vehicles.



Vermiculture.



Rainwater Harvesting.



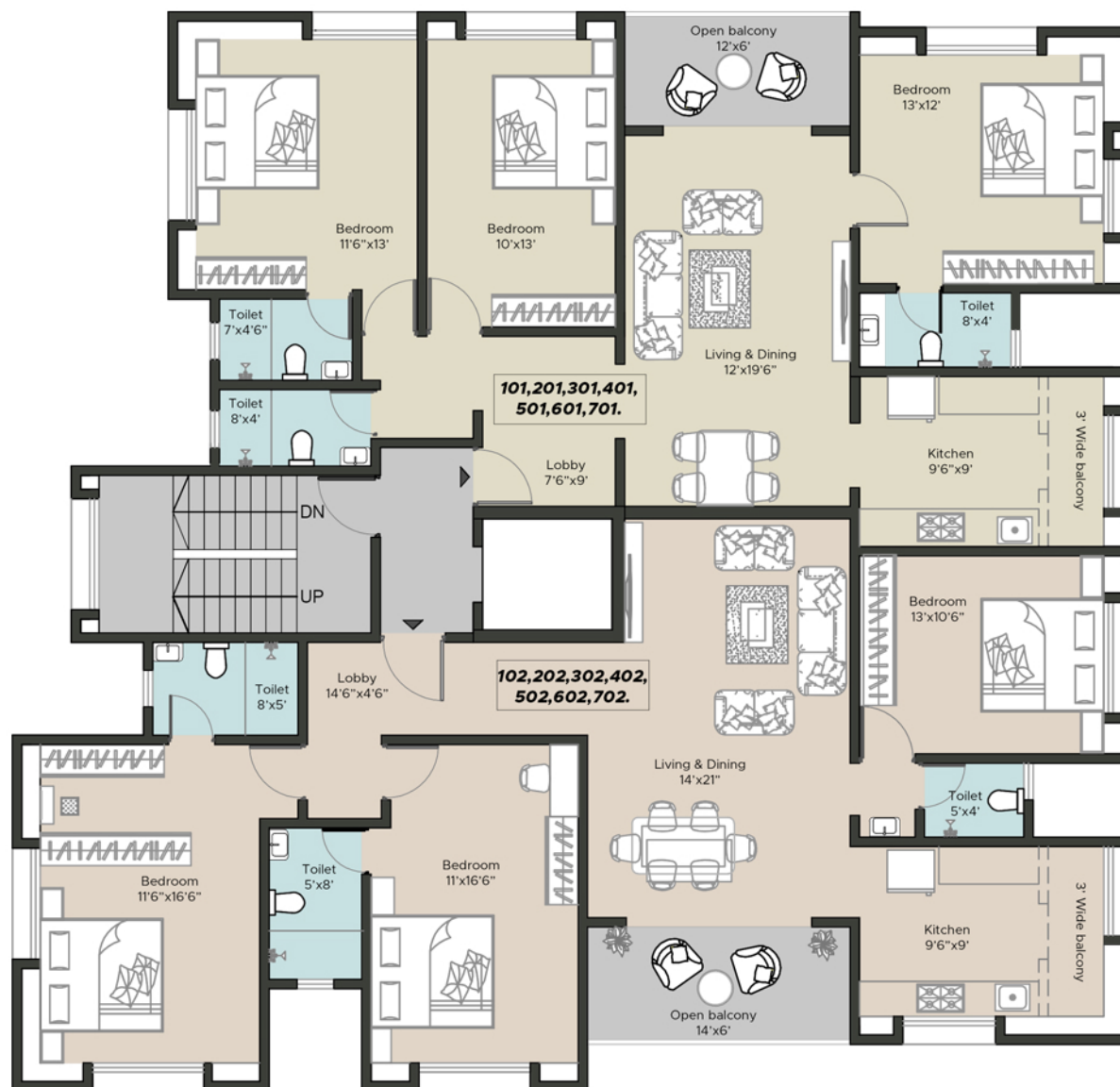
Designer entrance lobby with waiting area.





NO	CARPET	SALEABLE
101,201,301, 401	1179.94 sqft	1592.91 sqft

NO	CARPET	SALEABLE
102,202,302, 402,502	1301.25 sqft	1756.68 sqft





**Kitchen**

Vitrified flooring tiles (Kajaria or equivalent).  
Dado tiles (upto ceiling level)  
Black granite platform.  
Sanitary fittings (Jaquar or equivalent).

**Living Room / Dining**

Vitrified tiles flooring (Kajaria or equivalent).  
Tv/telephone/internet points.  
Adequate light and fan points.  
Designer main door.  
UPVC windows with safety grill.  
Granite window sills.  
Water based lustre paint.  
Electrical fittings (Legrand or equivalent).

**Washroom**

Anti skid flooring.  
Dado tiles (ceiling level).  
Electrical fittings (Legrand or equivalent).  
Exhaust fan and adequate lights.  
Concealed plumbing with Jaquar or equivalent sanitary fittings.

**Sitout**

Anti skid flooring.  
Glass railing.  
Ventilated Safety door.

**Bedrooms**

Vitrified tiles flooring (Kajaria or equivalent).  
Wooden tiles flooring (Master bedroom).  
Electrical fittings (Legrand or equivalent).  
Tv/telephone/internet points (Master bedroom, BR1).  
Adequate light and fan points.  
Laminated flush door.  
UPVC windows with safety grill.  
Granite window sills.  
Water based lustre paint.

**3Bhk Flat - 1179.94 sqft Total carpet**  
**(101, 201, 301, 401)**







*"Flats thoughtfully designed to cater to the functional needs and comfort of senior citizens."*







DISCLAIMER  
This brochure is a purely conceptual representation and not a legal offering. All images in this brochure are merely for representation and not literal. The images are only indicative of furniture arrangement, furniture and accessories will not be provided by the developer. All plans are subject to accommodate the changes as per sanctioning authority. All dimensions mentioned in the drawings may vary/differ due to construction contingencies and site conditions. All dimensions are shown from unfinished surfaces.



#### Washroom

Anti skid flooring.  
Dado tiles (ceiling level).  
Electrical fittings (Legrand or equivalent).  
Exhaust fan and adequate lights.  
Concealed plumbing with Jaquar or equivalent sanitary fittings.

#### Bedrooms

Vitrified tiles flooring (Kajaria or equivalent).  
Wooden tiles flooring (Master bedroom).  
Electrical fittings (Legrand or equivalent).  
Tv/telephone/internet points (Master bedroom, BR1).  
Adequate light and fan points.  
Laminated flush door.  
UPVC windows with safety grill.  
Granite window sills.  
Water based lustre paint.

#### Kitchen

Vitrified flooring tiles (Kajaria or equivalent).  
Dado tiles (upto ceiling level)  
Black granite platform.  
Sanitary fittings (Jaquar or equivalent).

#### Living Room

Vitrified tiles flooring (Kajaria or equivalent).  
Tv/telephone/internet points.  
Adequate light and fan points.  
Designer main door.  
UPVC windows with safety grill.  
Granite window sills.  
Water based lustre paint.  
Electrical fittings (Legrand or equivalent).

#### Sitout

Anti skid flooring.  
Glass railing.  
Ventilated Safety door.

3Bhk Flat - 1301.25 sqft Total carpet  
(102, 202, 302, 402, 502)



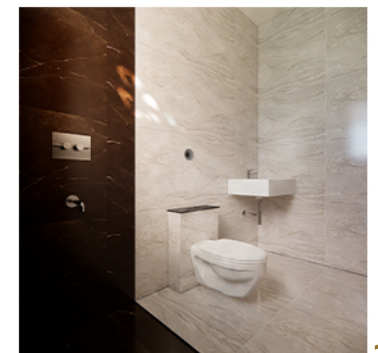
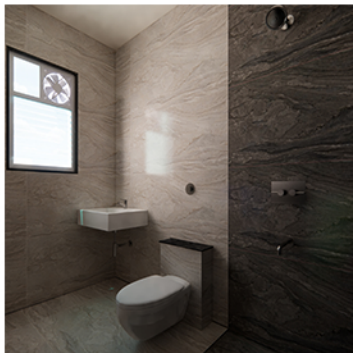




*"A home you can be proud of."*







**DISCLAIMER**  
 This brochure is a purely conceptual representation and not a legal offering. All images in this brochure are merely for representation and not literal. The images are only indicative of furniture arrangement, furniture and accessories will not be provided by the developer. All plans are subject to accommodate the changes as per sanctioning authority. All dimensions mentioned in the drawings may vary/differ due to construction contingencies and site conditions. All dimensions are shown from unfinished surfaces.



### Site address

Plot no.93-B, Mitramandal  
Colony, Parvati, Pune

### Office Address

Anandee Homes  
102, Shridharprasad Apt,  
Plot 87, Mitramandal  
Colony, Parvati 411009

### Contact Information

Website: [www.anandeehomes.in](http://www.anandeehomes.in),  
[www.dataengineering.com](http://www.dataengineering.com)  
Mail ID:  
[kishor.paranjape@dataengineering.com](mailto:kishor.paranjape@dataengineering.com)  
[sales.anandeehomes@dataengineering.com](mailto:sales.anandeehomes@dataengineering.com)  
Contact No. +91 9850241041

### Architects

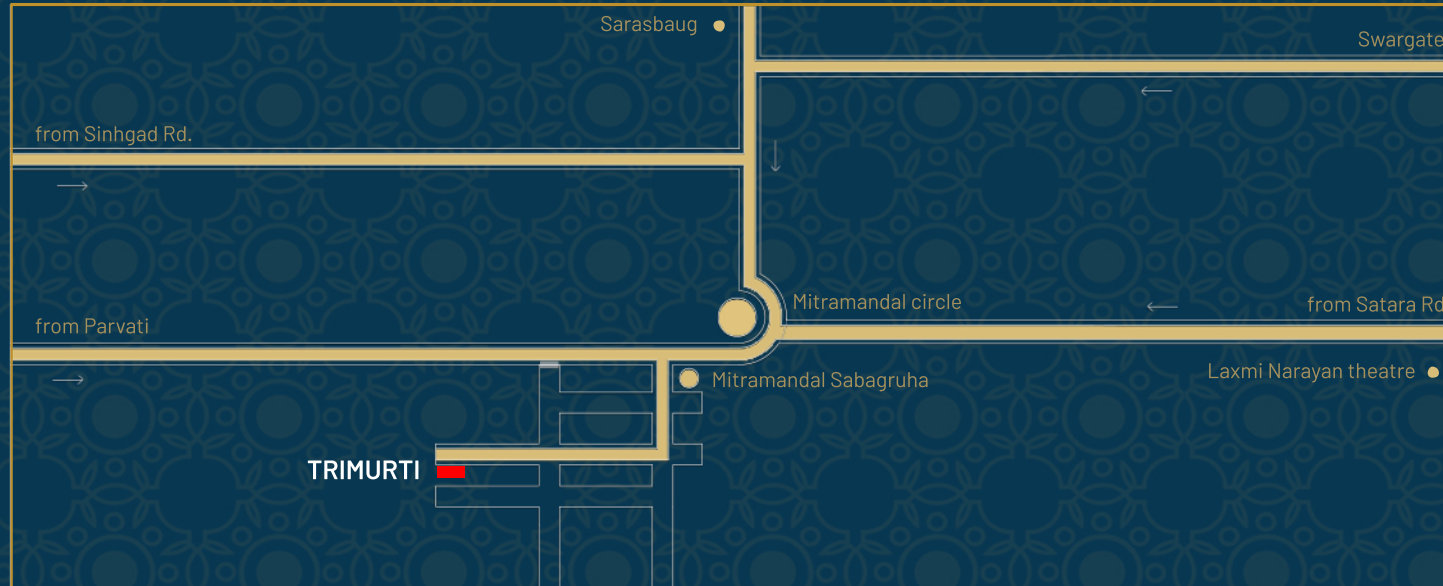
Ajit Bhagat & Associates  
Contact No. 9422029209

### Legal Advisor

Adv. Devendra Saralkar  
Contact No. 9822043484

### Structural Consultants

Suhas Joshi & Associates  
Contact No. 9822049886



P52100078407

त्रिमूर्ती

आनंदी  
HOMES